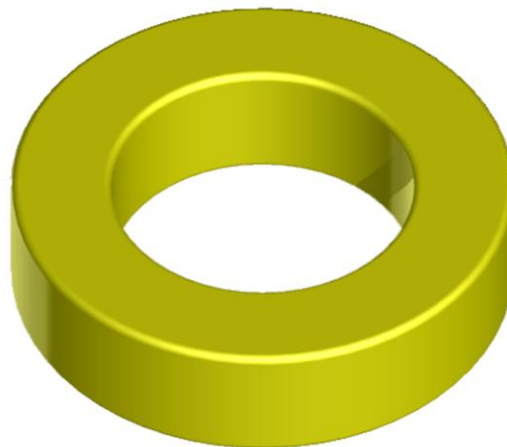


# TT80-26 IRON DUST CORE

## General core information

Effective Parameters irrespective of material grade (per set)

- Effective Length ( $L_e$ ) 5.14mm
- Effective Area ( $A_e$ ) 0.231mm<sup>2</sup>
- Effective Volume ( $V_e$ ): 1.19mm<sup>3</sup>



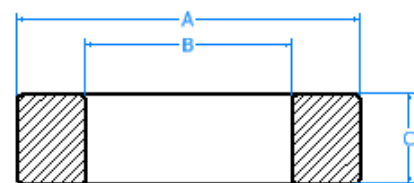
## Technical Specifications (Coated)

Material	Initial Permeability ( $\mu_{iac}$ )	Ordering code
-26	4.60uH $\pm$ 10%	TT8026

Test Conditions: 10 KH@500Gs

## Dimensions (Coated)

Dimensions	(mm)	AL Value (nH/n <sub>2</sub> ) +8%
A	20.2	46.0
B	12.6	46.0
C	6.35	46.0



SECTION B-B  
SCALE 3 : 1

