

Yunpen IEC Filters

Current Ratings: **1, 3, 6, 10** AMPS.

Operating Voltage: Single Phase 250VAC.

The Yunpen IEC range of chassis and PCB mounted filters, offers high levels of attenuation with low earth leakage, whilst remaining very competitively priced. In addition to the standard range options are available for medical use, earth line-choke or in-line fused thus allowing you to choose the best model suited to your application. The Yunpen IEC range of filters are single stage devices and can be fitted with 'Y' class capacitors for the commercial market place, or without for medical applications. All units are housed in plated steel enclosures and encapsulated in polyurethane compound to provide excellent protection from shock and vibration.



TYPICAL APPLICATIONS

- Gaming machines
- Switch mode power supplies
- IT equipment
- Medical appliances
- Test instruments
-

TECHNICAL ADVANTAGES

- Micro size
- High common & differential mode insertion loss
- International approvals

COMMERCIAL ADVANTAGES

- Assists compliance with the EMC directive
- State of the art technology ensures superior performance
- Competitively priced
- Compact size - Reduced weight - Cost effective component

STANDARDS

The Yunpen IEC range of filters are built in accordance with the relevant BS, VDE, UL, CE & CSA safety standards.

All Total EMC Products filters & power supplies are designed to meet the latest requirements for Health and Safety, Particularly EN 60939-2-2005

The Yunpen IEC range are specifically designed to assist commercial & Medical Equipment to meet European Emission standards. eg. EN55011, EN55014, EN55022, EN50081-2 and EN50081-1.

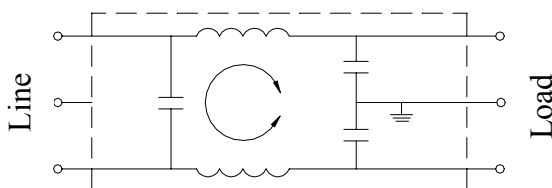
REGULATIONS

From the 15th of December 2004 all electrical/electronic apparatus - with few exceptions - sold or taken into service within the European Community must comply with the essential requirements of the EMC directive 2004/108/EC.

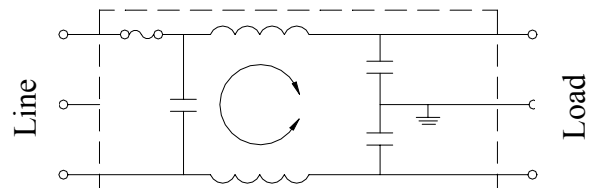
Failure to do so is a criminal offence in the U.K.

Schematics

YA-T1, YA-T3, YA-P, YB-T1, YB-T3, YB-A1,
YB-A3, YO-T1, YO-Y3, YO-A1, YO-A3



YL-T1



Technical Specifications

YA-YB Range

Part No	Rated Voltage	Rated Current	Leakage Current	Test Voltage		Insulation Resistance	Direct Current Resistance	Temperature Rise	Operating Temperature	Attenuation		Inductance
				Line to Line	Line to Ground					Normal Mode 25db MIN	Common Mode 25db MIN	
YA01T1 YA01T3 YA01P YB01T1 YB01T3	250V AC	1A	0.8mA MAX 250V, 50 Hz	1450V DC	2250V DC	100MΩMIN 250V DC	0.5ΩMAX	30°C MAX	-25 ~ +85°C	0.60 ~ 45MHz	0.10 ~ 40MHz	3.7mH
YA03T1 YA03T3 YA03P YB03T1 YB03T3	250V AC	3A	0.8mA MAX 250V, 50 Hz	1450V DC	2250V DC	100MΩMIN 250V DC	0.2ΩMAX	30°C MAX	-25 ~ +85°C	0.80 ~ 50MHz	0.20 ~ 50MHz	1.8mH
YA06T1 YA06T3 YA06P YB06T1 YB06T3	250V AC	6A	0.8mA MAX 250V, 50 Hz	1450V DC	2250V DC	100MΩMIN 250V DC	0.15ΩMAX	30°C MAX	-25 ~ +85°C	0.80 ~ 50MHz	0.40 ~ 50MHz	0.7mH
YA10T1 YA10T3 YA10P YB10T1 YB0T3	250V AC	10A	0.8mA MAX 250V, 50 Hz	1450V DC	2250V DC	100MΩMIN 250V DC	0.1ΩMAX	30°C MAX	-25 ~ +85°C	1.00 ~ 50MHz	1.00 ~ 50MHz	0.3mH

YL Range

Part No	Rated Voltage	Rated Current	Leakage Current	Test Voltage		Insulation Resistance	Direct Current Resistance	Temperature Rise	Operating Temperature	Attenuation		Inductance
				Line to Line	Line to Ground					Normal Mode 25db MIN	Common Mode 25db MIN	
YL01T1	250V AC	1A	0.8mA MAX 250V, 50 Hz	1450V DC	2250V DC	100MΩMIN 250V DC	0.5ΩMAX	30°C MAX	-25 ~ +85°C	0.40 ~ 50MHz	0.10 ~ 45MHz	3.7mH
YL03T1	250V AC	3A	0.8mA MAX 250V, 50 Hz	1450V DC	2250V DC	100MΩMIN 250V DC	0.2ΩMAX	30°C MAX	-25 ~ +85°C	0.50 ~ 50MHz	0.13 ~ 50MHz	1.8mH
YL06T1	250V AC	6A	0.8mA MAX 250V, 50 Hz	1450V DC	2250V DC	100MΩMIN 250V DC	0.15ΩMAX	30°C MAX	-25 ~ +85°C	0.80 ~ 40MHz	0.50 ~ 47MHz	0.7mH
YL10T1	250V AC	10A	0.8mA MAX 250V, 50 Hz	1450V DC	2250V DC	100MΩMIN 250V DC	0.1ΩMAX	30°C MAX	-25 ~ +85°C	1.20 ~ 50MHz	1.50 ~ 50MHz	0.3mH

YO Range

Part No	Rated Voltage	Rated Current	Leakage Current	Test Voltage		Insulation Resistance	Direct Current Resistance	Temperature Rise	Operating Temperature	Attenuation		Inductance
				Line to Line	Line to Ground					Normal Mode 25db MIN	Common Mode 25db MIN	
YO01T1 YO01T3 YO01A1 YO01A3	250V AC	1A	0.8mA MAX 250V, 50 Hz	1450V DC	2250V DC	100MΩMIN 250V DC	0.5ΩMAX	30°C MAX	-25 ~ +85°C	0.60 ~ 45MHz	0.10 ~ 40MHz	3.7mH
YO03T1 YO03T3 YO03A1 YO03A3	250V AC	3A	0.8mA MAX 250V, 50 Hz	1450V DC	2250V DC	100MΩMIN 250V DC	0.2ΩMAX	30°C MAX	-25 ~ +85°C	0.80 ~ 50MHz	0.20 ~ 50MHz	1.8mH
YO06T1 YO06T3 YO06A1 YO06A3	250V AC	6A	0.8mA MAX 250V, 50 Hz	1450V DC	2250V DC	100MΩMIN 250V DC	0.15ΩMAX	30°C MAX	-25 ~ +85°C	0.80 ~ 50MHz	0.40 ~ 50MHz	0.7mH
YO10T1 YO10T3 YO10A1 YO10A3	250V AC	6A	0.8mA MAX 250V, 50 Hz	1450V DC	2250V DC	100MΩMIN 250V DC	0.1ΩMAX	30°C MAX	-25 ~ +85°C	1.00 ~ 50MHz	1.00 ~ 50MHz	0.3mH

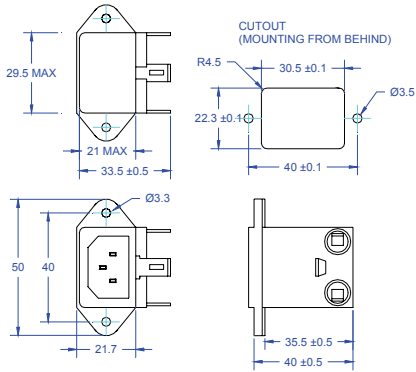
Part number / Ordering information

In addition to the standard range of filters & power supplies, Total EMC Products specialize in the design and manufacture of filters to suit your specific requirements. Due to continuous development Total EMC Products Ltd reserve the right to amend any information contained within this datasheet without prior notice.

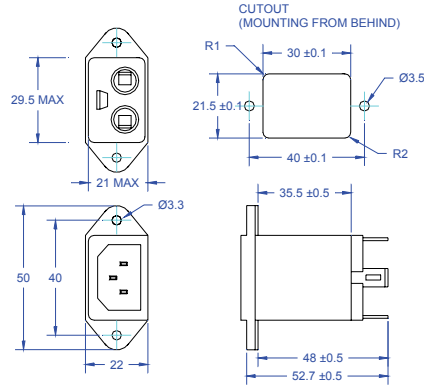
© 10/2012 Total EMC Products Ltd. E & OE
The contents of the datasheet must not be copied by any means without prior written agreement.

Dimensional Data

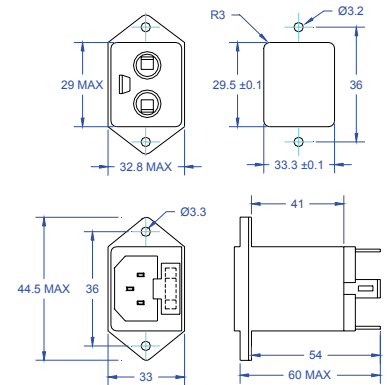
YA-T1/YA-T3 Range



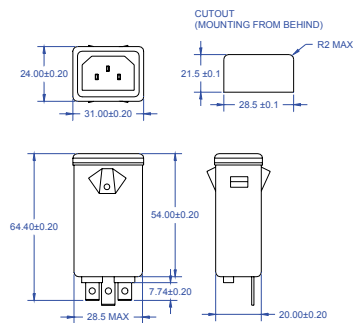
YB-T1/YB-T3 Range



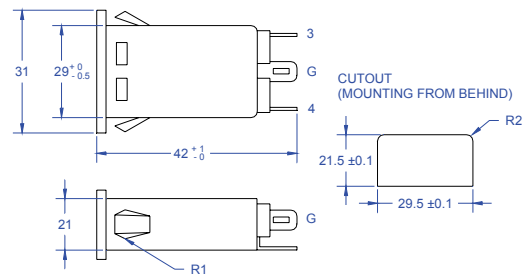
YL-T1 Range



YO-A1/YO-A3 Range

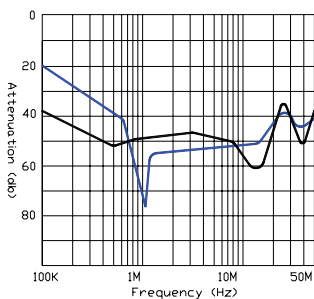


YO-T1/YO-T3 Range

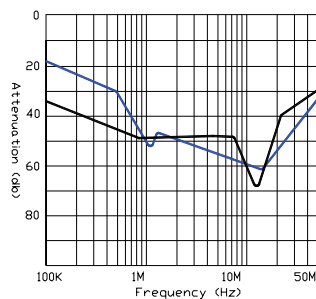


Performance characteristics insertion loss curves

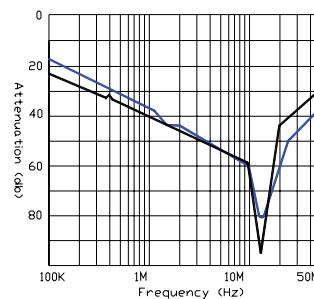
1A



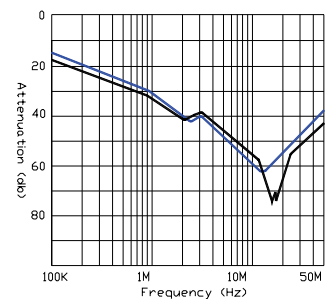
3A



6A



10A



Normal Mode
Common Mode