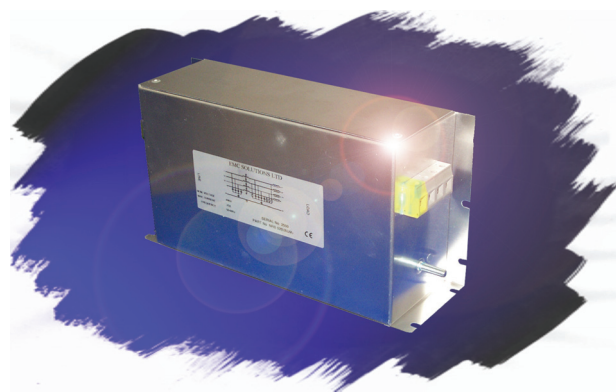


Military UPS Filters

REL/025/M

Current Ratings: **25** AMPS.
Operating Voltage: Single Phase 230V A.C.

The REL/025/M filter has been specifically designed to overcome EMC problems inherently caused by the UPS System applications especially where size constraints are an issue. This new range of micro size filters has high attenuation factors and high current capabilities without having a large profile. UPS Systems electronically switch high voltages and currents to improve efficiency and reduce losses in the system. This switching generates high levels of Radio Frequency interference (RFI) and high-energy surges, which can disturb or damage other electronics circuits. The REL/025/M series is a two-stage design in a 2 line format, with output line inductors to suppress di/dt switching currents that are harmful to capacitors that are present on the supply. The filter components are housed in compact chassis mounted, aluminum enclosures that allows side or base mounting, it is then encapsulated in a polyurethane potting compound to give excellent protection against shock and vibration.



TYPICAL APPLICATIONS

- UPS units
- High current switch mode power supplies
- Thyristor driven equipment
- Uninterruptible power supplies
- Pulse width modulation circuits

TECHNICAL ADVANTAGES

- High current capability - Micro size
- High common & differential mode insertion loss
- Improved low frequency performance
- Insulated safety screw contacts
- Side or base mounting
- Optional input transient suppression to suit application



COMMERCIAL ADVANTAGES

- Assists compliance with the EMC directive
- State of the art technology ensures superior performance
- Competitively priced
- Compact size - Reduced weight - Cost effective component

Technical Specifications

Current (Amps)	No of Lines	Operating Voltage @ 50-60Hz	Max AC Volt Drop @ Full Load	Earth Leakage mA	Inductance Per Line (Typical) mH	Transient Energy Absorption (Typical)	Storage Temp Range	Temp Rise @ Full Load	Termination Type	Dimensions									
										A	B	C	D	E	F	G	H	I	J
25	2	Single Phase 230V	<1V/Line	5-10	3	75J Optional	-25 ~ +85°C	<40°C	Insulated Screw Terminal	230	130	70	200	214	50	60	105	6	M6 x 20mm

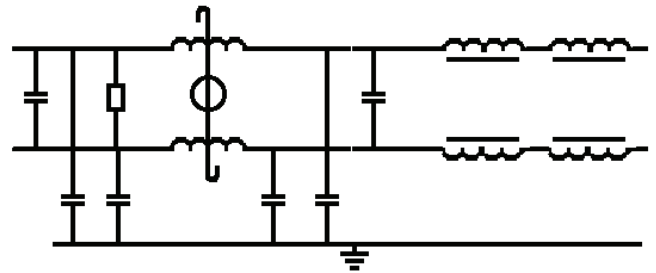
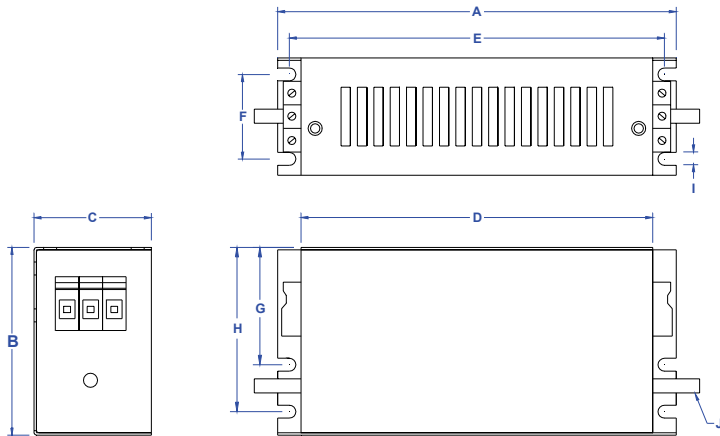
STANDARDS

The REL/025/M range of filters are built in accordance with the relevant BS, VDE, UL, CE & CSA safety standards. All Total EMC Products Ltd filters & power supplies are designed to meet the latest requirements for Health and Safety, Particularly EN 60939-2-2005. The REL/025/M range is specifically designed to assist AC input - UPS Systems Military Standards. E.g. Def-Stan 59-41, 59-411

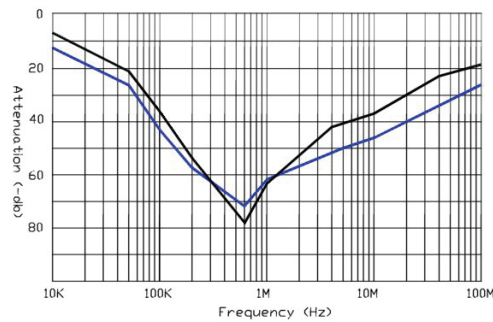
REGULATIONS

From the 15th of December 2004 all electrical/electronic apparatus - with few exceptions - sold or taken into service within the European Community must comply with the essential requirements of the EMC directive 2004/108/EC. Failure to do so is a criminal offence in the U.K.

Dimensional Data & Schematic



Performance characteristics insertion loss curves



Part number / Ordering information

REL/025/M

REL = Range of filter
025 = 25 Amps
M = Military

Options: T = Transient, H = High Transient, - = neither (no options)

In addition to the standard range of filters & power supplies, Total EMC Products specialize in the design and manufacture of filters to suit your specific requirements. Due to continuous development Total EMC Products Ltd reserve the right to amend any information contained within this datasheet without prior notice.

© 10/2012 Total EMC Products Ltd. E & OE
The contents of the datasheet must not be copied by any means without prior written agreement.