

# CUSTOM

## 4 Way Filter Range

Current Ratings: **10** AMPS.  
8 Line, DC Filter, Condenser Unit

The 4 line filter has been designed to be chassis mounted and provide a feed through of up to 4 power or data lines. The filter is made of aluminium and the filter is encapsulated in polyurethane to ensure shock and vibration is contained. The input is via a mil std circular connector to provide a screened connection through the filter. The filtration performance of the filter has been tuned to provide the best for use with DC applications and air conditioning. The filter has 3 separate chambers to provide a high attenuation at high frequencies.

### TYPICAL APPLICATIONS

- Military Vehicle equipment
- Air-conditioning
- DC Power supplies
- DC Pulse reduction

### TECHNICAL ADVANTAGES

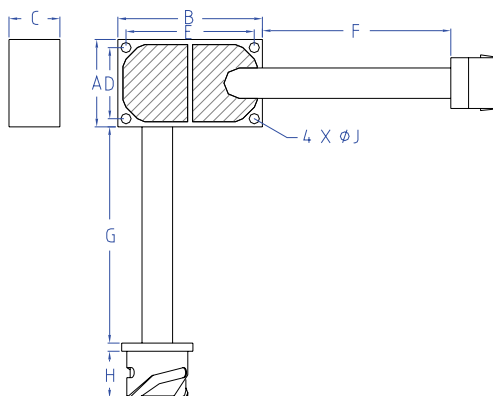
- High saturation levels
- Pulse power integration
- Light weight
- Encapsulated for robust mechanical strength.



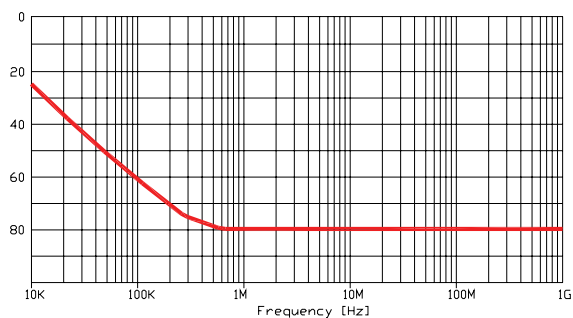
### Technical Specifications

Current (Amps)	No of Lines	Operating Voltage	Max Volt Drop Load	Earth Leakage mA	Inductance Per Line (Typical mH)	Storage Temp Range	Temp Rise @ Full Load	Termination Type	Dimensions								
									A	B	C	D	E	F	G	H	J
10	4	63V	0.1V	N/A	-	-25~ +85°C	<35°C		44	71	25	35	63	150	220	23	6

## Dimensional Data



## Performance characteristics insertion loss curves



10A

## Part number / Ordering information

WEB / 008 / A

**DESCRIPTION:** 10A, 4 Line, 24VDC High Performance EMI/ RFI Mains Filter. Evaporator unit (filter kit) ( Foden Trucks).

In addition to the standard range of filters & power supplies, Total EMC Products specialize in the design and manufacture of filters to suit your specific requirements. Due to continuous development Total EMC Products Ltd reserve the right to amend any information contained within this datasheet without prior notice.

© 10/2012 Total EMC Products Ltd. E & OE  
The contents of the datasheet must not be copied by any means without prior written agreement.